



**Subject:** CDC Driver

**Revision:** 2.0

**Issue Date:** 03/02/2016

# **Access CDC Driver**

## **USB Driver for CDC Mode**

### **Installation Guide**

Product names mentioned herein are for identification purposes only and may be trademarks and/or registered trademarks of their respective companies.

**© Copyright 2016**

**ALL RIGHTS  
RESERVED**

---

#### **Access IS**

18 Suttons Business Park, Reading  
Berkshire, RG6 1AZ, United Kingdom  
Tel: +44 (0) 118 966 3333  
Web: [www.access-is.com](http://www.access-is.com)  
Email: [support@access-is.com](mailto:support@access-is.com)

# Contents

---

1.	Introduction .....	3
1.1	Supported operating systems (32- and 64-bit).....	3
1.2	Supported USB devices .....	3
2.	Installation procedure .....	4
2.1	Before you start.....	4
2.2	Windows 7 installation .....	4
2.3	Windows 10 installation .....	7
A.	Document history .....	9

# 1. Introduction

---

The Access CDC driver allows you to connect an Access IS USB device to the host via a virtual serial port.

---

**Note:** *Due to the nature of CDC serial port drivers, the COM port disappears if the unit is unplugged.*

---

## 1.1 Supported operating systems (32- and 64-bit)

- Windows XP
- Windows Vista
- Windows 7
- Windows 8, 8.1
- Windows 10

## 1.2 Supported USB devices

- OCR: 310 / 312 / 313 / 315 / 316 / 317 (includes 'e' variants)
- LSR: 106 / 110 / 116 / 118
- ATR: 110

## 2. Installation procedure

---

Perform this installation process once per computer.

If you connect additional CDC devices to the host computer, Windows will automatically identify new CDC devices and install the Access driver.

### 2.1 Before you start

1. Download the CDC driver software (USB Driver for CDC Mode).

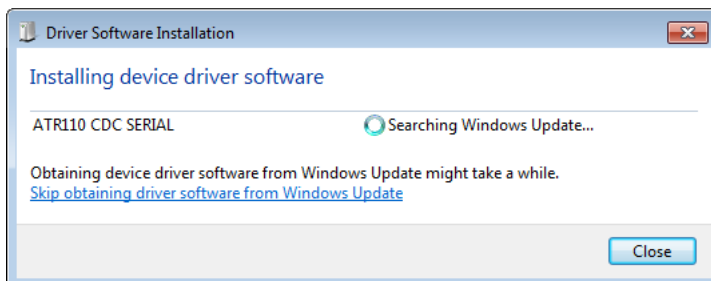
You can download the software from <http://www.access-is.com/gettingstarted/>.

2. Extract the contents of the download file to a folder on your computer.

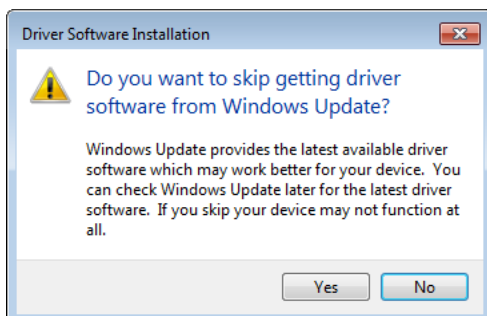
### 2.2 Windows 7 installation

1. Plug the device into a USB port on the host computer.

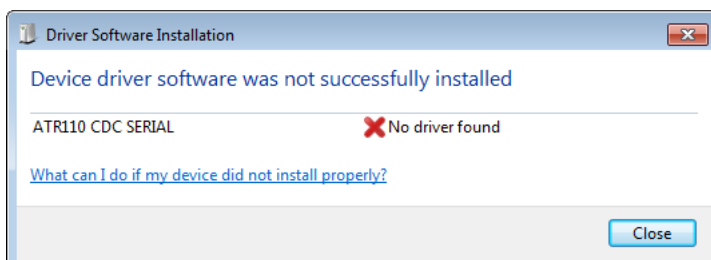
Windows detects and attempts to locate device driver software.



2. Click **Skip obtaining driver software from Windows update**.



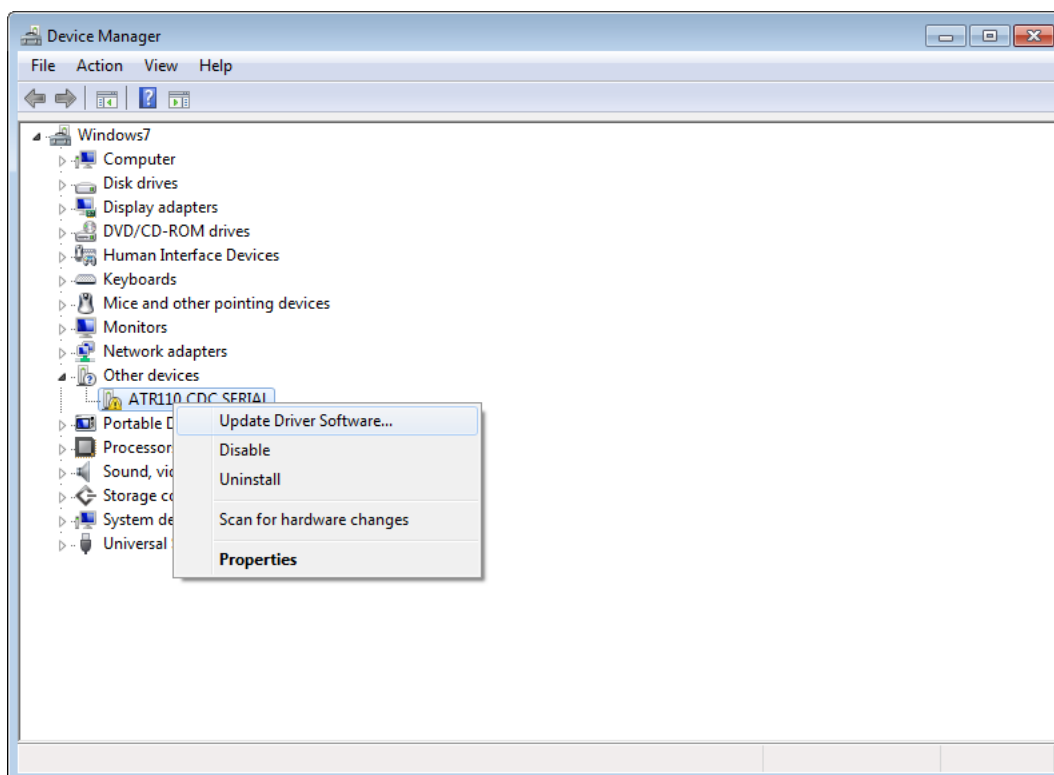
3. Click **Yes** to confirm and then click **Close**.



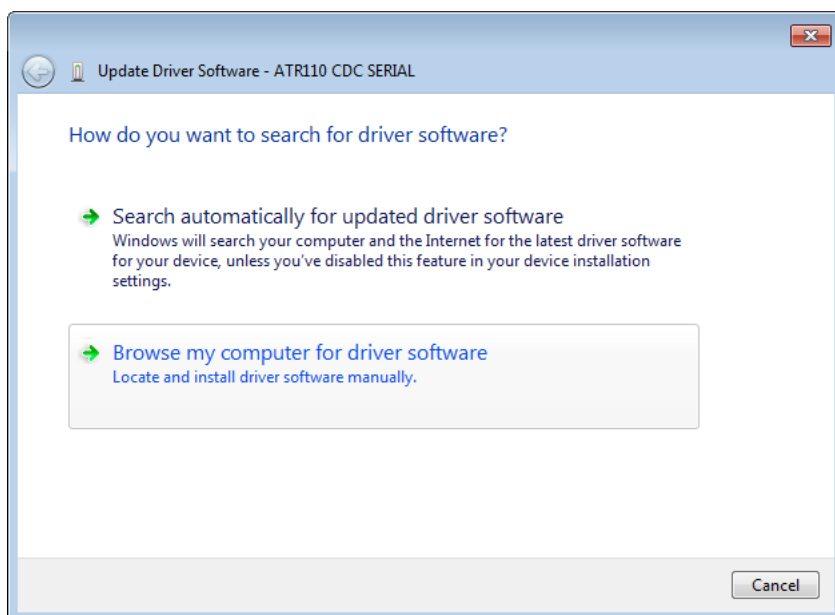
4. Open Device Manager.

The device appears under **Other devices**.

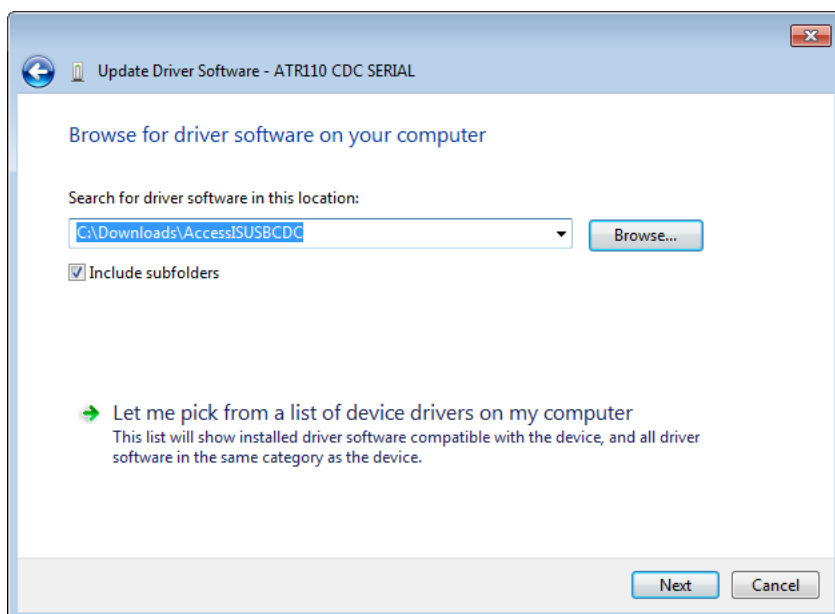
5. In Device Manager, right-click the device name and then click **Update Driver Software**.



6. In the **Update Driver Software** dialog box that appears, click **Browse my computer for driver software**.

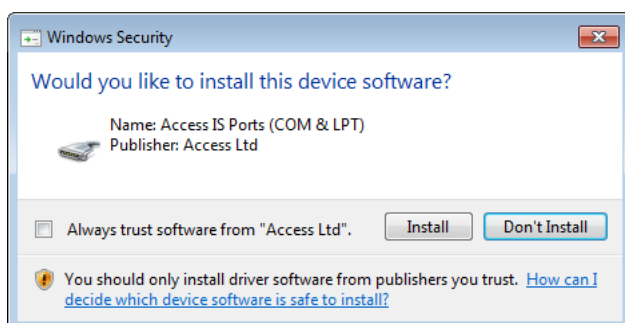


7. Click **Browse** and select the folder containing the extracted Access driver files.



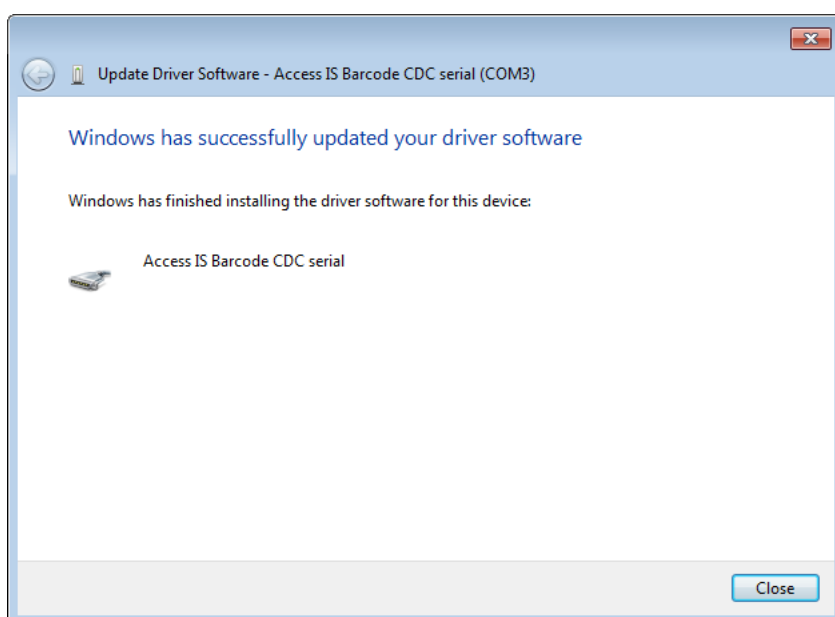
8. Click **Next**.

Windows asks if you want to install the device software.

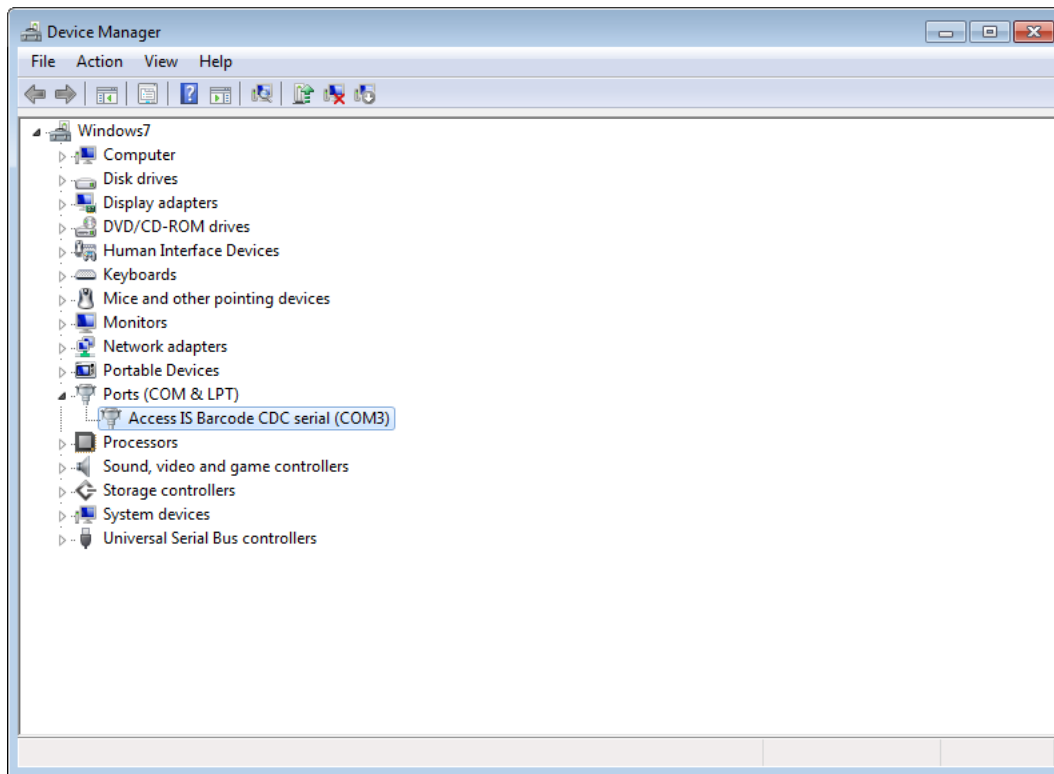


9. Click **Install** to start the installation.

10. When installation is complete, click **Close**.



Device Manager displays the name of the connected device under **Ports (COM & LPT)** together with the COM port number.



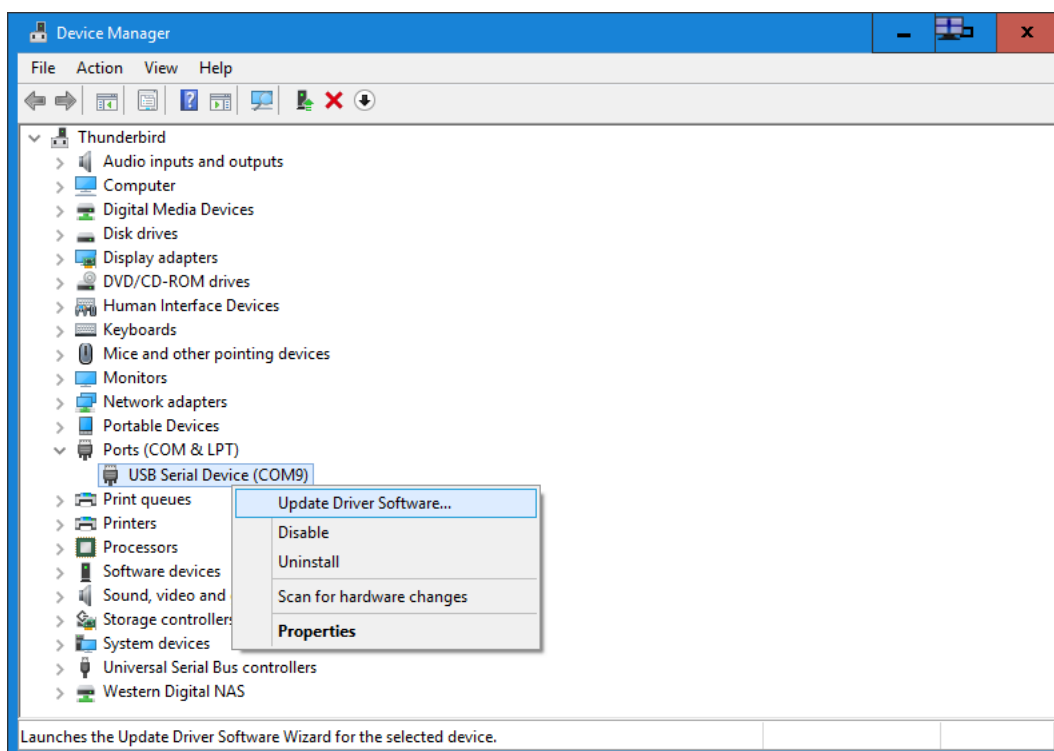
You can now connect to the device using the specified COM port.

## 2.3 Windows 10 installation

1. Plug the device into a USB port on the host computer.

Windows detects and installs the device.

2. Open Device Manager.
3. In Device Manager, expand **Ports (COM & LPT)** and right-click the device name (USB Serial Device) and then click **Update Driver Software**.

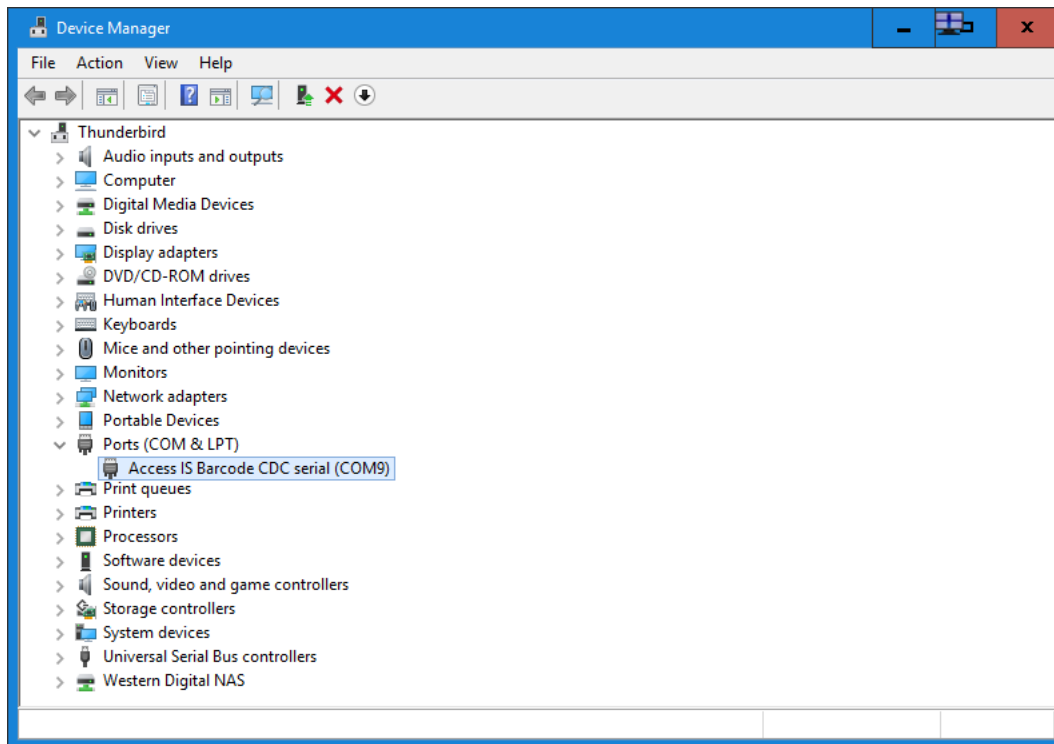


4. In the **Update Driver Software** dialog box that appears, click **Browse my computer for driver software**.
5. Click **Browse** and select the folder containing the extracted Access driver files.
6. Click **Next**.

Windows asks if you want to install the device software.

7. Click **Install** to start the installation.
8. When installation is complete, click **Close**.

Device Manager displays the name of the connected device together with the COM port number.



You can now connect to the device using the specified COM port.



## A. Document history

---

Issue	Date	Description
1	2013	Initial release
2	03/02/2016	Style and content updates Windows 10 instructions added