



# MTTTY

Terminal Emulation Software for use with Access products



## Data Rates:

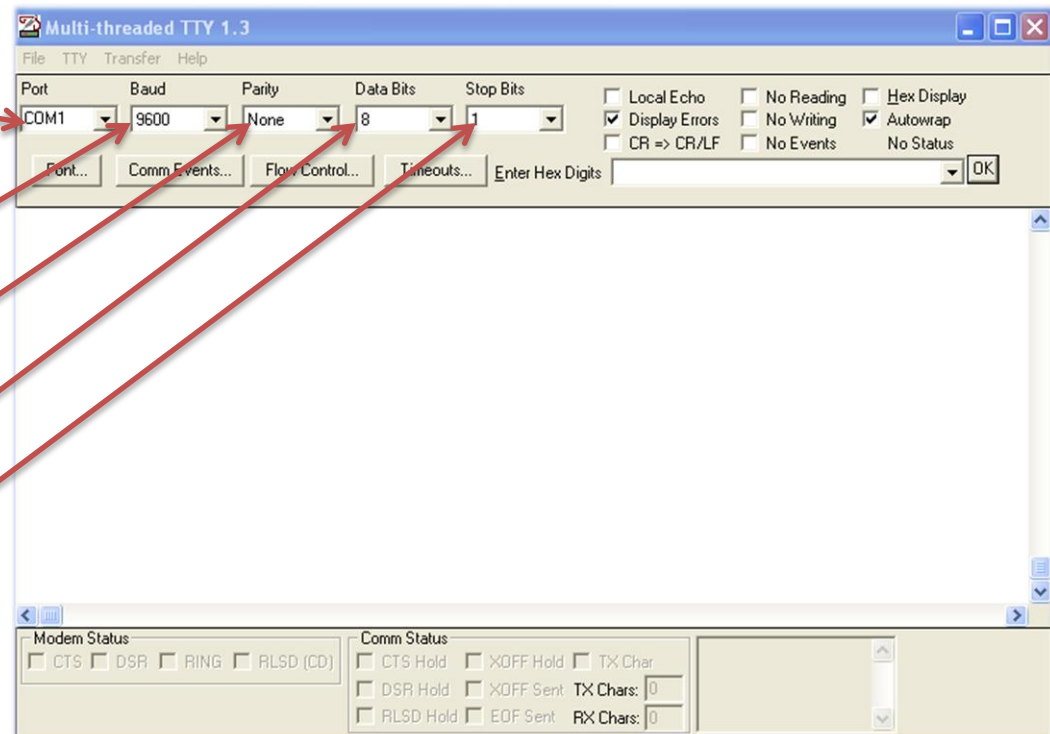
Port – This changes the COM port which MTTTY communicates on.

Baud – This changes the baud rate which MTTTY expects.

Parity – This changes the parity which MTTTY expects.

Data bits – This changes the data bits which MTTTY expects.

Stop bits – This changes the number of stop bits that MTTTY expects



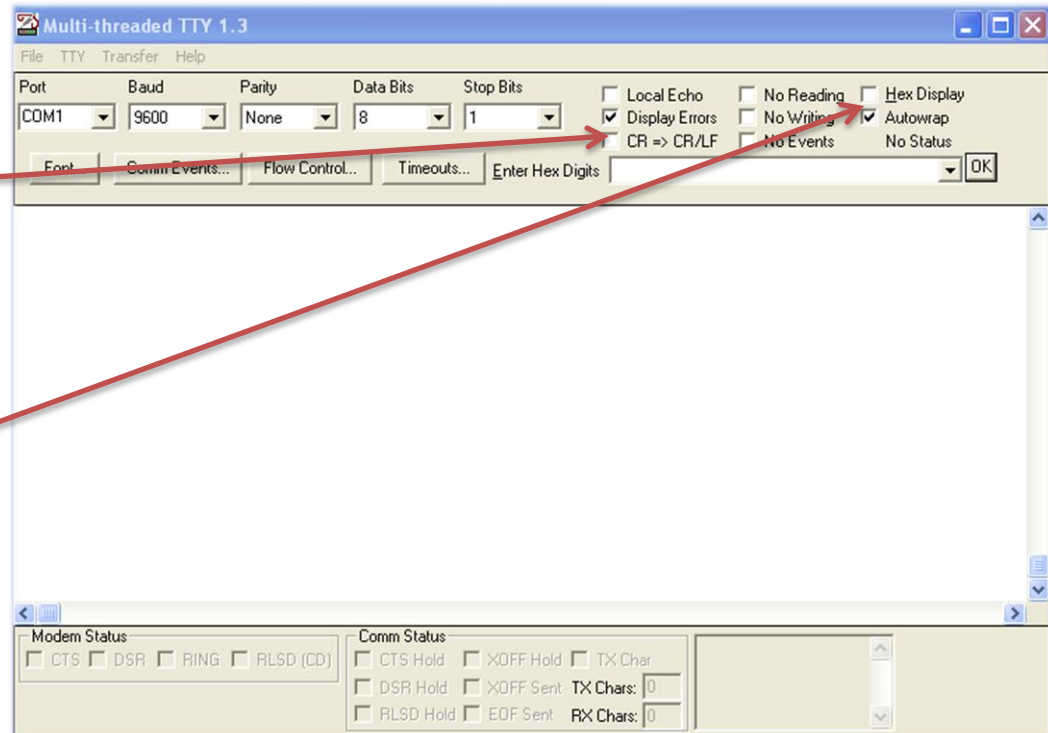
*An incorrect setting in the above 4 configurations will cause incorrect data to appear in the output screen.*

## Additional Settings:

Display CR => CR/LF – This forces MTTTY to display data on the next line, failure to tick this box will allow MTTTY to overwrite scanned data.

Hex Display – This converts the standard ASCII output to hex format, this overrides the above setting.

In standard ASCII format control characters (such as 0x02) are displayed graphically as standard.



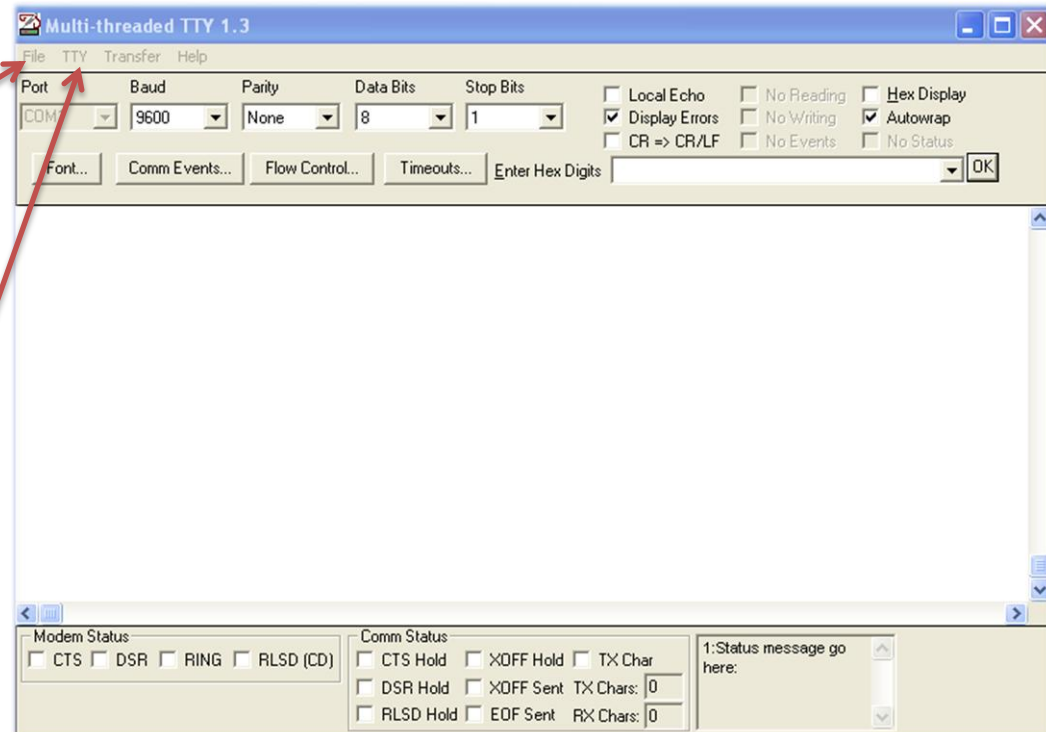


## Using MTTTY:

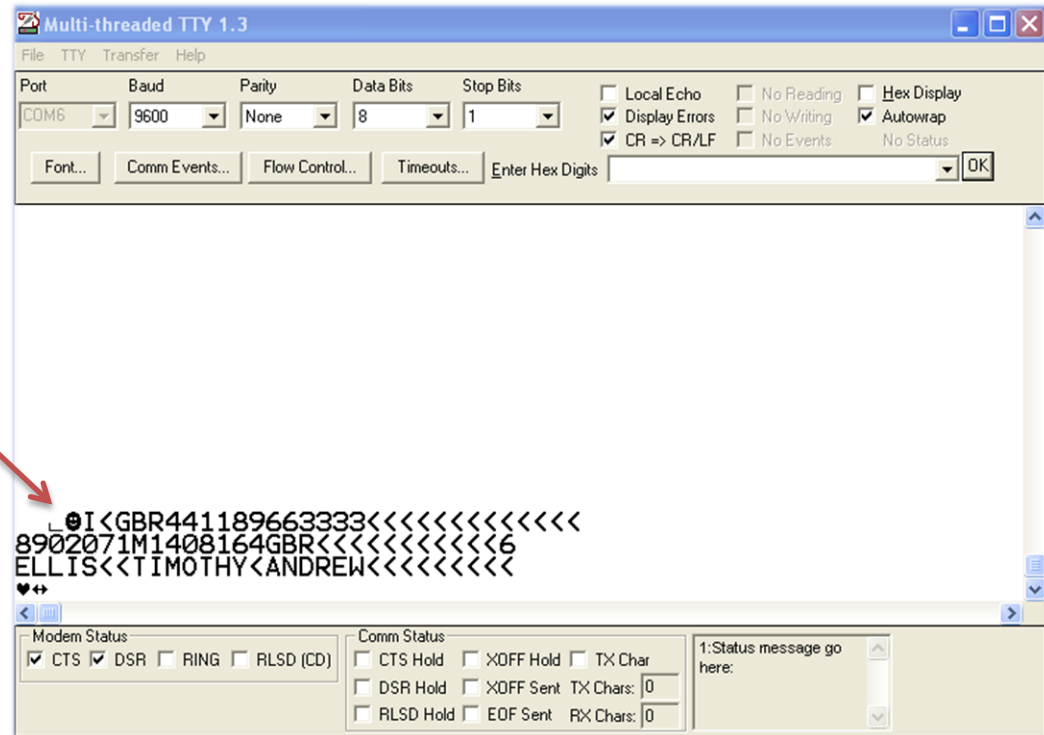
Once MTTTY is configured correctly you must connect to the device. This is done under the File dropdown menu. The COM port will then be greyed out.

*It is important to close MTTTY properly after use to release the COM port.*

Data can be cleared from the screen using the “clear” command under the TTY dropdown menu.



Data appears the central box as illustrated.





## Using MTTTY:

Data can be sent to the device using the box illustrated.

Data must be sent in Hex format which each character separated by a space.

e.g. <STX>MIL is sent as:  
02 4D 49 4C

