



Subject: Read Me

Revision: 1.0

Issue Date: 29.06.2022

Product names mentioned herein are for identification purposes only and may be trademarks and/or registered trademarks of their respective companies.

© Copyright 2022

ALL RIGHTS RESERVED

VideoOCR API

Access Document Reader Software

Read Me

Access-IS

18 Suttons Business Park, Reading
Berkshire, RG6 1AZ, United Kingdom
Tel: +44 (0) 118 966 3333
Web: www.access-is.com
Email: support@access-is.com

Contents

1.	Installation	3
2.	Getting started	5
2.1	File locations.....	6
2.1.1	Base directory	6
2.1.2	Bin	6
2.1.3	Documentation.....	6
2.1.3.1	User Guides	6
2.1.3.2	APIs	6
2.1.4	Includes.....	7
2.1.5	Libs.....	7
2.1.6	License.....	7
2.1.7	SDK.....	8
2.1.8	Tools	9
2.2	Configuration Files.....	9
3.	Supported devices.....	10

1. Installation

The scanner SDK is available in both 32 and 64Bit version. The installers are available from the **Access-IS website** (<http://www.access-is.com/gettingstarted/>):

For 32Bit installation:

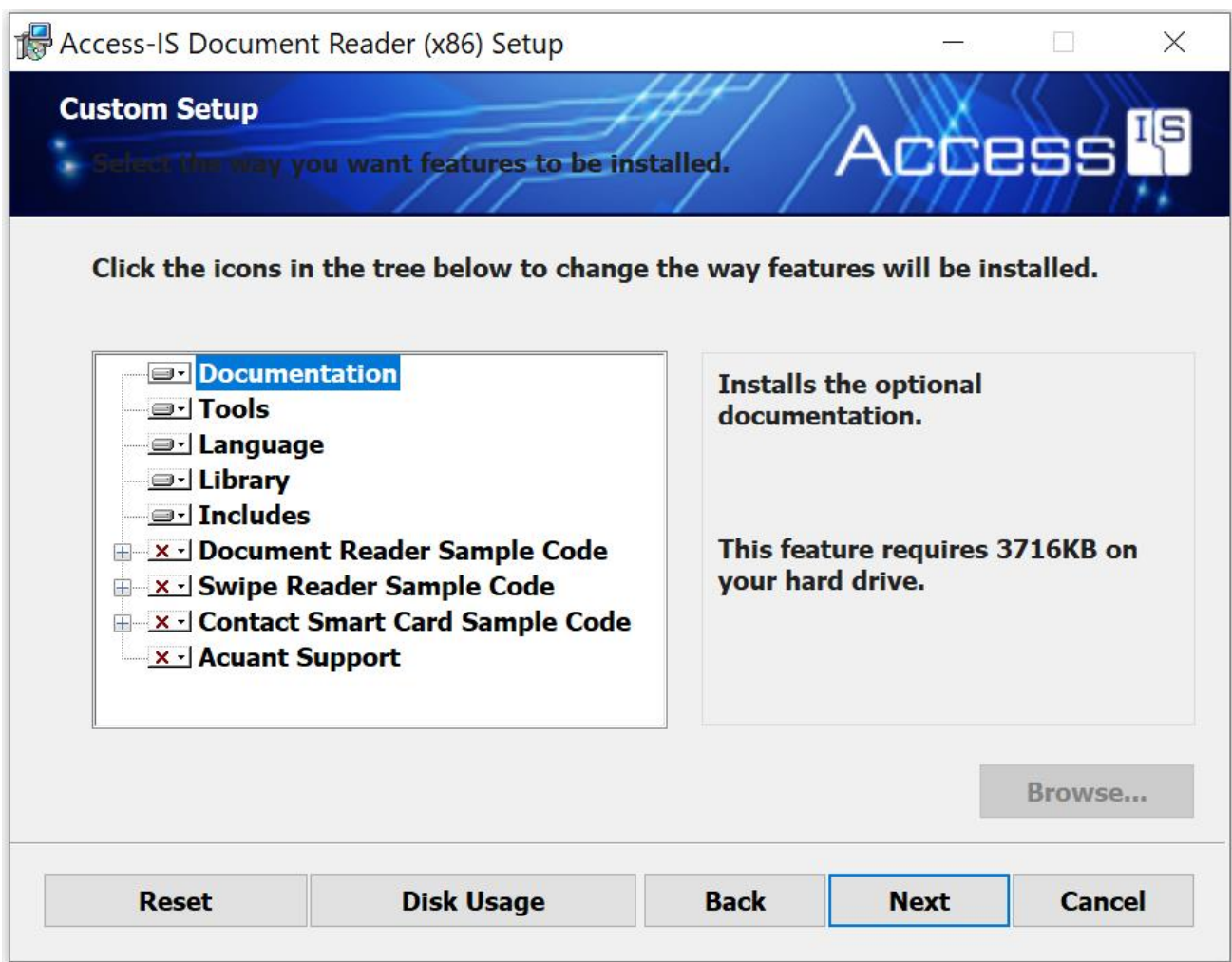
AccessISDocumentReaderx86.msi

For 64Bit installation:

AccessISDocumentReaderx64.msi

The installation procedure for both versions is the same. The 32Bit version has an extra option, Acuant support. This is a licensed option so only select if the appropriate license has been obtained.

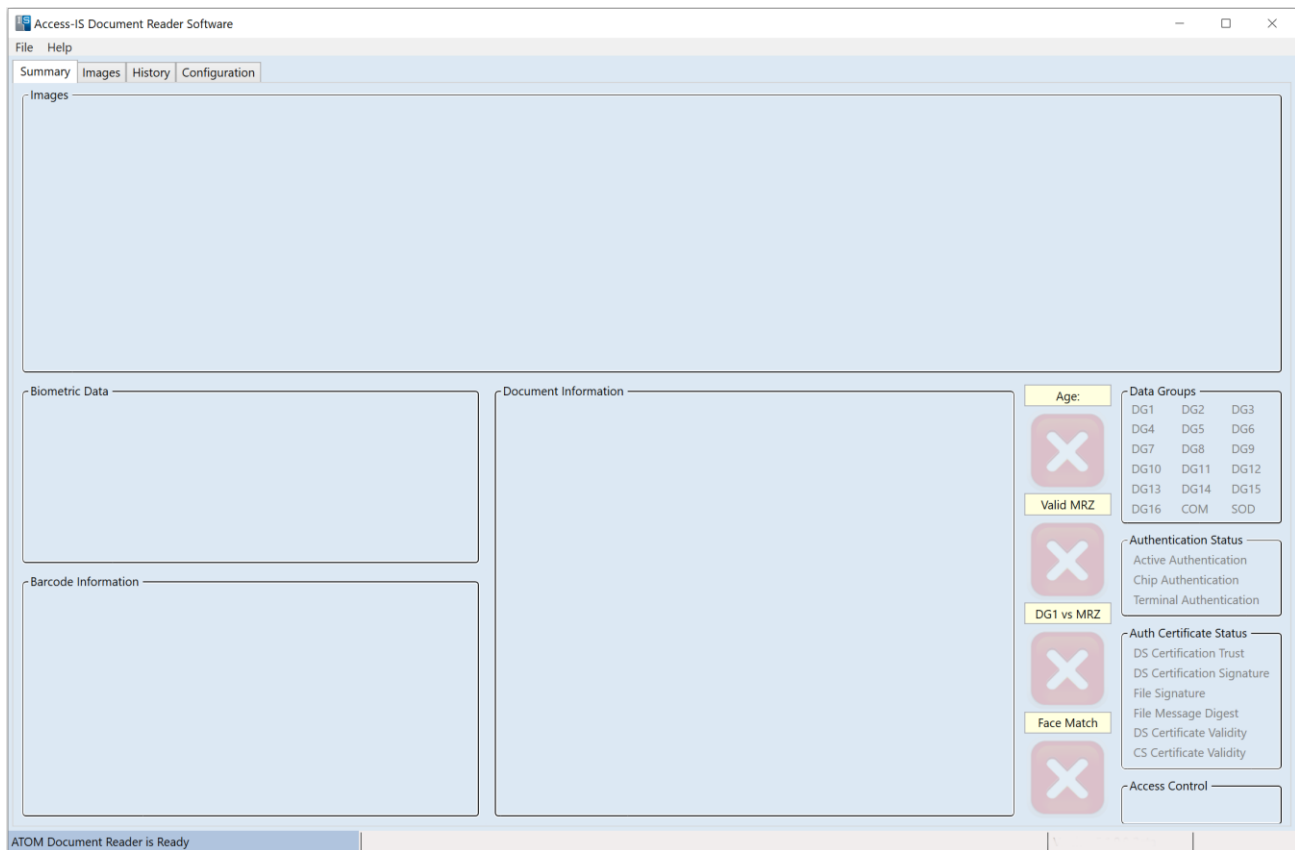
After initiating the install, when the following dialog box appear (32Bit install shown) it allows the user to choose the options to be installed.



If the sampled code and Acuant support is required these need to be selected as they are marked as optional.

2. Getting started

As part of the installation a user front end is installed “adr.exe” in the “Bin” folder. This will allow the user to test that the install is correct, and the scanner is working correctly.



See the ADRS User guide for further information.

2.1 File locations

If the Access-IS SDK is installed in the default directory, then the file locations are as follows:

2.1.1 Base directory

This is the directory where the SDK is installed:

For 32Bit installation:

`C:\Program Files (x86)\Access-IS Document Reader`

For 64Bit installation:

`C:\Program Files\Access-IS Document Reader`

Under the base directory there are six subdirectories, seven if the samples are installed.

2.1.2 Bin

This directory holds all the libraries and executables.

2.1.3 Documentation

This directory holds all the SDK documentation. Depending on what the user selects at install time the following documentation is available.

2.1.3.1 User Guides

- ADRS
- Certificate Import
- Diagnostics
- Programmers
- Scanner Calibration

2.1.3.2 APIs

- VideoOCR
- Barcode
- RFID
- MSR
- Smart Card
- *Validation

* - Only installed if selected by user at installation time. Currently on available in the 32Bit installation.

2.1.4 Includes

This directory holds all the included files of the installed DLLs.

VideoOCR.h	- Main API call signatures.
rfidDLLDef.h	- RFID API call signatures.
barcodeDLLDel.h	- Barcode API call signatures.
mrzDLLDef.h	- Parsed MRZ API call signatures.
mrzCompareDLLDef.h	- RFID/MRZ compare API call signatures.
FaceRecDLLDef.h	- Face comparison API call signatures.
ScDLL.h	- Smart Card API call signatures.
MsrDLL.h	- Magnetic Swipe reader API call signatures.
*ValidationDLLDef.h	- Validation API call signatures.

* - Only installed if selected by user at installation time. Currently on available in the 32Bit installation.

2.1.5 Libs

This directory holds all the import libraries, to allow the user to link to the SDK DLLs.

VideoOCR.lib	- Main API import library.
Access_IS_SC.lib	- Smart Card API import library.
Access_IS_MSR.lib	- Magnetic Swipe Reader API import library.

2.1.6 License

This directory holds a copy of the license agreements for the DLLs.

2.1.7 SDK

This directory holds all the example applications, with source code, that interfaces to the DLLs. All the example applications come with a C++ and C# version. Depending on what the user selects at install time the following applications are available.

Document reader sample -

Shows all the main functionality MRZ, Barcode, RFID reading, and face detect.

Swipe reader sample -

Shows all the main functionality for the Magnetic Swipe Reader.

Contact smart card sample -

Shows all the main functionality for the Smart Card Reader.

*Validation sample –

Shows all the main functionality MRZ, Barcode, RFID reading, and face detect. With the addition of the validation functionality.

Note:-

* - Only installed if selected by user at installation time. Currently on available in the 32Bit installation.

The sample applications demonstrate the main functions in the APIs, but it is not a comprehensive list of all the calls available.

2.1.8 Tools

This directory holds support applications.

Scanner Diagnostic – Performs Level 1 diagnostics on the connected scanner.

Logger Configuration – Configures the logging variables.

2.2 Configuration Files

As part of the installation some configuration files and data files are installed. The location of the files is shown below:

`C:\ProgramData\Access-IS\DocumentReader\Data`

Certificates - Directory that stores the certificate database for RFID.

AccessISConfig.xml - Internal configuration data for the software. This should not be modified as it may affect performance.

AccessISLogger.xml - Configuration data for the logger functionality. This can be modified using the Logger Configuration tool.

3. Supported devices

The following scanner types can be used with the installed software

- Half-page passport reader OCR601MK2
- Photo ID reader ADR100 (No RFID)
- Full-page passport reader OCR640e
- Full-page passport reader ATOM

A. Document history

Issue	Date	Description
1.0	29-06-2022	First issue